

Split-Core AC Current Output Transformer

MAG-J36C005

36mm Opening With Ratings Up to 200 Amps

Description:

Magnelab's MAG-J36C005 split-core current transformer "senses" AC current up to 200 Amps passing through the center conductor. Split-core transformers are ideal for installation on existing electrical wiring by snapping around the conductor. The MAG-J36C005 has a self-locking mechanism.

Features:

- Rated input up to 200 Amp
- Output of 5 Amps at rated current
- Accuracy Class 3 up to 2.5 VA
- Accuracy at 5% to 120% of rated current



- Protection level 6.5Vp Bipolar
- Frequency range 50/60 Hz
- 2 X M3-Screw terminals
- System Voltage: 720 V, CAT II or CAT III 600VAC
- UL recognized, CE, and RoHS compliant

PART NUMBER AND RATING

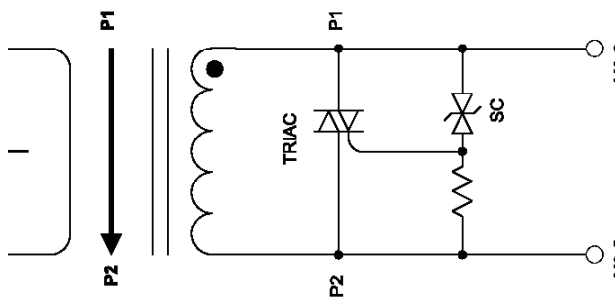
MAG-J36-C005-200	200Amp
------------------	--------

DIMENSION

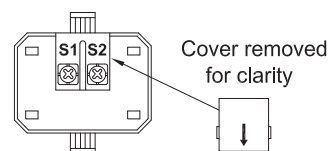
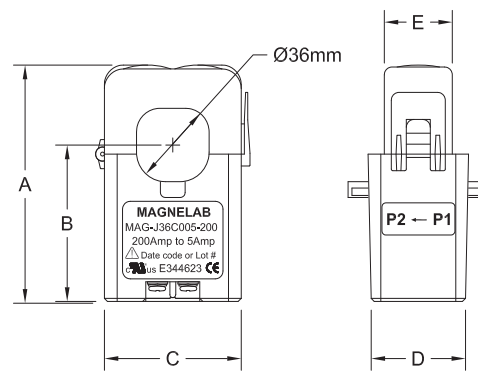
INCH

MM

DIMENSION	INCH	MM
A	3.64	92.50
B	2.25	57.15
C	2.25	57.15
D	1.58	40.25
E	0.88	22.35



SCHEMATIC



Bottom View