

# Split-Core AC Current 4 to 20 mA Transducer MAG-J24M420

24mm Opening With Ratings Up to 250 Amps

**Description:**

Magnelab's MAG-J24M420 split-core current transducer "senses" AC current up to 250 Amps passing through the center conductor. Split-core transducers are ideal for installation on existing electrical wiring by snapping around the conductor. The MAG-J24M420 has a self-locking mechanism.

**Features:**

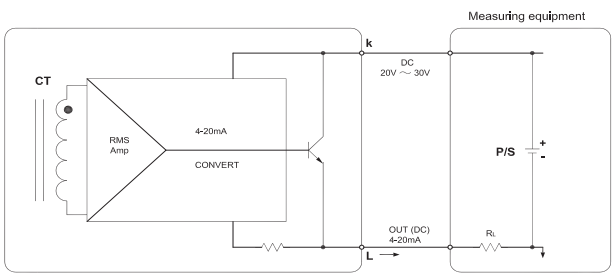
- Rated input up to 250 Amp
- Output of standard 4 to 20 mA DC
- Accuracy +/- 2%, Ripple within 2% of output voltage
- Maximum load resistance: 600 Ohms at P/S: 24V



- Max allowable current 120% continuous, 150 % 1min
- Frequency range 50/60 Hz
- 2 X M3-Screw terminals
- Installation Category CAT III
- UL recognized, CE, and RoHS compliant

PART NUMBER AND RATING	
MAG-J24M420-250	250Amp

DIMENSION	INCH	MM
A	3.00	76.00
B	1.87	47.50
C	1.77	45.00
D	1.34	34.00
E	0.84	21.34



2-Wire transmission method (loop powered) using P/S (+ side) of Measuring equipment

SCHMATIC

